



**MEYERCORD**



Parts Manual (#xxxxxxxx)



**“A”-Type Lateral Packing Conveyor**



**Information, Orders, & Technical Support: 1-800-639-3799**

This documentation is protected by United States copyright laws.  
Copyright 2001 by The Meyercord Company. All rights reserved.  
Reproduction of material is strictly prohibited without written permission.  
The Meyercord Company, 365 E. North Avenue, Carol Stream, IL.  
60188. Printed in the United States.

## Introduction

The Meyercord Company reserves the right to make necessary alterations in the machine specifications to meet customer requirements. Some illustrations and information in this manual may not exactly match in detail each machine.

The contents of this manual have been prepared to help you identify and locate replaceable parts for the machine you have just received. While the machine(s) within this book are represented in the fullest detail, understand that not all parts shown may be available for ordering. Keep this manual available for quick reference.

After reading the following “**How to**” section, you should be able to navigate through any of the assembly drawings to find the necessary parts needed to continue proper function of the equipment.

---

# “A” TYPE LATERAL PACKING CONVEYOR

Product code: 26

## How to use this manual

An **Assembly Tree** is a list of an assembly’s components, be it individual parts or smaller sub-assemblies. These sub-assemblies each have their own assembly tree detailing their individual parts.

The Table of Contents divides the machine into sections according to its main assemblies function or style:

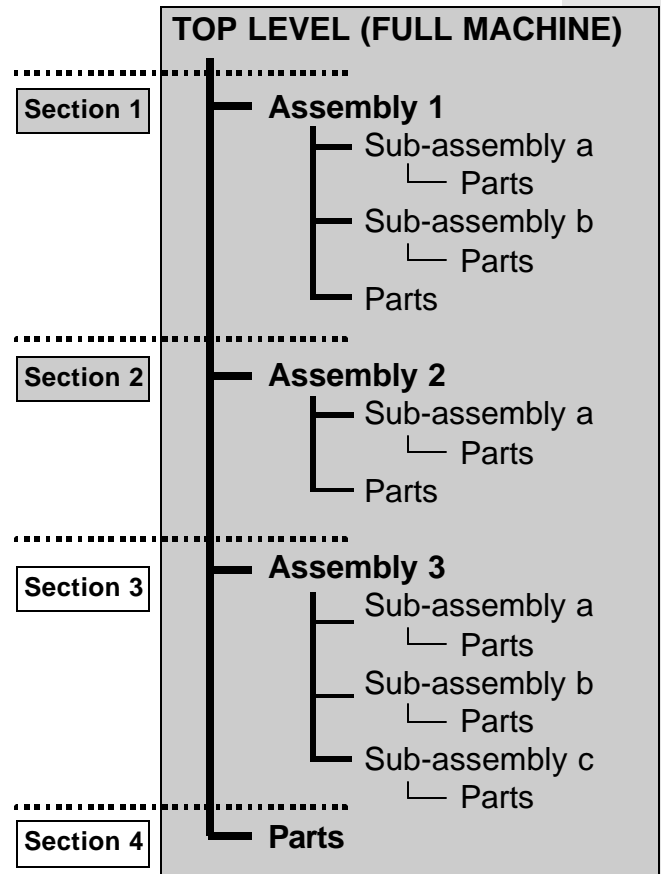
**Section 1 = Assembly 1**  
**Section 2 = Assembly 2, etc.**

Each section contains all of the parts used to make that particular assembly.

For example, **Section 1** begins with an assembly tree list and a drawing for “Assembly 1”. This drawing will be followed by its sub-assemblies’ drawings, in the order they are listed. All assemblies are represented before moving on to **Section 2**.

The next page illustrates how to find the parts you need as well as some important information about the contents of these manuals.

### Assembly Tree



## How to use this manual (cont'd)

### Assembly Tree page

Item	Qty	P/N	Title	Stocked	ProdCode
1	1	197763	Assembly,Pot & Insulation	No	7
2	1	197774	Assembly,Glue Wheel	No	7
3	1	197796	Assembly,Lid	No	7
4	1	197785	ASSEMBLY,Flap Runner	No	7
5	1	197752	Assembly,Shell	No	7

1. In this example, we need a new glue wheel. We know it is on the Hot Melt Glue Pot. By looking at the full assembly (top level) of the Glue Pot, we know that the part is located on the **Glue Wheel Assembly**. The drawings for each assembly follow the same order as they do in the list. In this case, our assembly will be the second drawing.
2. Use the six-digit **Phantom Assembly\*** number to locate the correct drawing. These numbers are located on the *top* of the **Assembly Tree page** and the *bottom-right* of the **Drawing page** (see facing page). In this example, the Glue Wheel Assembly number is **197774**.
 

**\*NOTE: Phantom Assemblies** and their numbers are created by Engineering to re-construct the machine within the computer. These assemblies are **NOT available from the Parts Department (unless stated in the Stocked column)**. They are used in this book **only** as a visual reference to help you locate the *specific* part(s) that are available.
3. Use the detailed drawings to find the part you need. Each part has an **Item Number (A)** that will lead to the six-digit part number in the list on the *top-right of the drawing (B)*.
4. Find this number in the list on the **Assembly Tree page (C)**. This list contains information on both the quantity used and its stocked status. The **Stocked column\*** informs you as to whether or not this item is available for ordering (**D**). Remember that the stocked status may change slightly from time to time,. This will be reflected in future updates.

**\*NOTE:** Understand that just because a part has a 'no' in the **Stocked column** does *not* mean it is *never* available, just that it is not stocked in-house. In special situations, specific parts will be provided. These situations will be handled on an individual basis by the Parts Department.

**THIS DOES NOT APPLY TO PHANTOM ASSEMBLIES.**

# "A" TYPE LATERAL PACKING CONVEYOR

Product code: 26

Phantom Assembly #

Assembly Tree page

Assy Tree for: 197774 Printed 12/01

**197774**  
Assembly, Glue Wheel

Item	Qty	P/N	Title	Stocked	ProdCode
1	1	174960	Plate, Regulator	Yes	7
2	1	187841	Wheel, Glue 1	Yes	7
3	1	192285	Screw, Sh 1/4 x 3/8	Yes	0
4	1	172870	Nut, Hex, Full 10-24	Yes	0
5	2	148263	Screw, RHM 10-32 x 3/8	Yes	0
6	2	104692	Washer, Lock, Split 10	Yes	0
7	1	147482	Screw, RHM 8-32 x 3/8	Yes	0
8	1	104791	Washer, Lock, Split 8	Yes	0
9	1	161144	Bracket, Glue Wheel	Yes	7

C

Stocked Column

D

C

Part Numbers

C

Meyercord Revenue Co.  
365 East North Avenue, Carol Stream, Illinois 60188  
(630) 682-6200 Fax (630) 682-6269

197774  
Page 1 of 1

---

Phantom Assembly #

Drawing page

Item number

B

ITEM NO.	QTY.	PART NO.	DESCRIPTION
1	1	174-960	PLATE, REGULATOR
2	1	187-841	WHEEL, KNURLED GLUE 1
3	1	192-285	SCREW, SH 1/4 X 3/8
4	1	172-870	NUT, HEX, FULL 10-24
5	2	148-263	SCREW, RHM 10-32 X 3/8
6	2	104-692	WASHER, LOCK, SPLIT 10
7	1	147-482	SCREW, RHM 8-32 X 3/8
8	1	104-791	WASHER, LOCK SPLIT 8
9	1	161-144	BRACKET, MTG GLUE WHEEL

A

Item number

	TOLERANCES UNLESS OTHERWISE NOTED X = ±.05" XX = ±.015" XXX = ±.005" ANGLES = ±1/2° FRACTIONS = ±1/64"	MATERIALS SEE COMPONENTS FINISH NONE	PRODUCT: 7 PCH SHEET: 1 OF 1	 <b>MEYERCORD</b> <small>365 East North Avenue Carol Stream, Illinois 60188</small>							
<table style="width: 100%; border-collapse: collapse;"> <tr> <td style="border: none;">A</td> <td style="border: none;">01/29/2000</td> <td style="border: none;">RELEASED</td> <td style="border: none;">HT</td> </tr> <tr> <td style="border: none;">REV</td> <td style="border: none;">DATE</td> <td style="border: none;">DESCRIPTION</td> <td style="border: none;">APP</td> </tr> </table>	A	01/29/2000	RELEASED	HT	REV	DATE	DESCRIPTION	APP	<b>ASSEMBLY, GLUE WHEEL</b>	DESIGN XX XXX/XX SCALE 1:1 DRAWING JT 06/99 APPROV HT 7/2/99	<b>197-774</b>
A	01/29/2000	RELEASED	HT								
REV	DATE	DESCRIPTION	APP								

Phantom Assembly #

Drawing page



**Assy Tree for: 105891**

Printed 3/19/2002

**105891**

Lateral Packing Conveyor

No DOC file is available.

Type	CAT	Item Type	
Revision		Modeled	
Status	R	Old Part #	
Date	2/24/1998	ProdCode	26
By	jbt	user 5	

Item	Qty	P/N	Title
■ 3	2	189304	Assembly,Conveyor Legs
4	21	147196	Screw,HHC 1/4-20 x 1-1/4
5	21	104703	Washer,Lock,Split 1/4
6	2	106001	Plate,Conveyor Top
■ 7	1	189315	Assembly,Drive Shaft
■ 8	1	189326	Assembly,Idler Shaft
1	1	106309	Sprocket,Conveyor Belt
2	1	106298	Sprocket,Insert
3	1	106287	Shaft,Conveyor Sprocket
4	2	179338	Screw,Set Cup 10-32x3/16
9	1	106023	Belt,Conveyor,7.5 wide x132 lg
■ 10	1	189337	Assembly,Motor Unit
■ 12	1	189348	Assembly,End Cap Panel,Infeed
■ 13	1	189359	Assembly,Panel,End Cap,Stacking
14	3	147449	Screw,RHM 6-32 x 1
15	5	106034	Screw,RHM,6-32 x 1/2
16	8	105605	Washer,Lock,Split,#6
18	9	106056	Screw,FLHM 8-32 x 1/4
■ 19	1	154676	ASSEMBLY,100MM CHUTE BRACE
20	1	105627	Washer,Flat 1/4
23	2	104736	Screw,FLHM 10-32 x 3/8

**Assy Tree for: 105891**

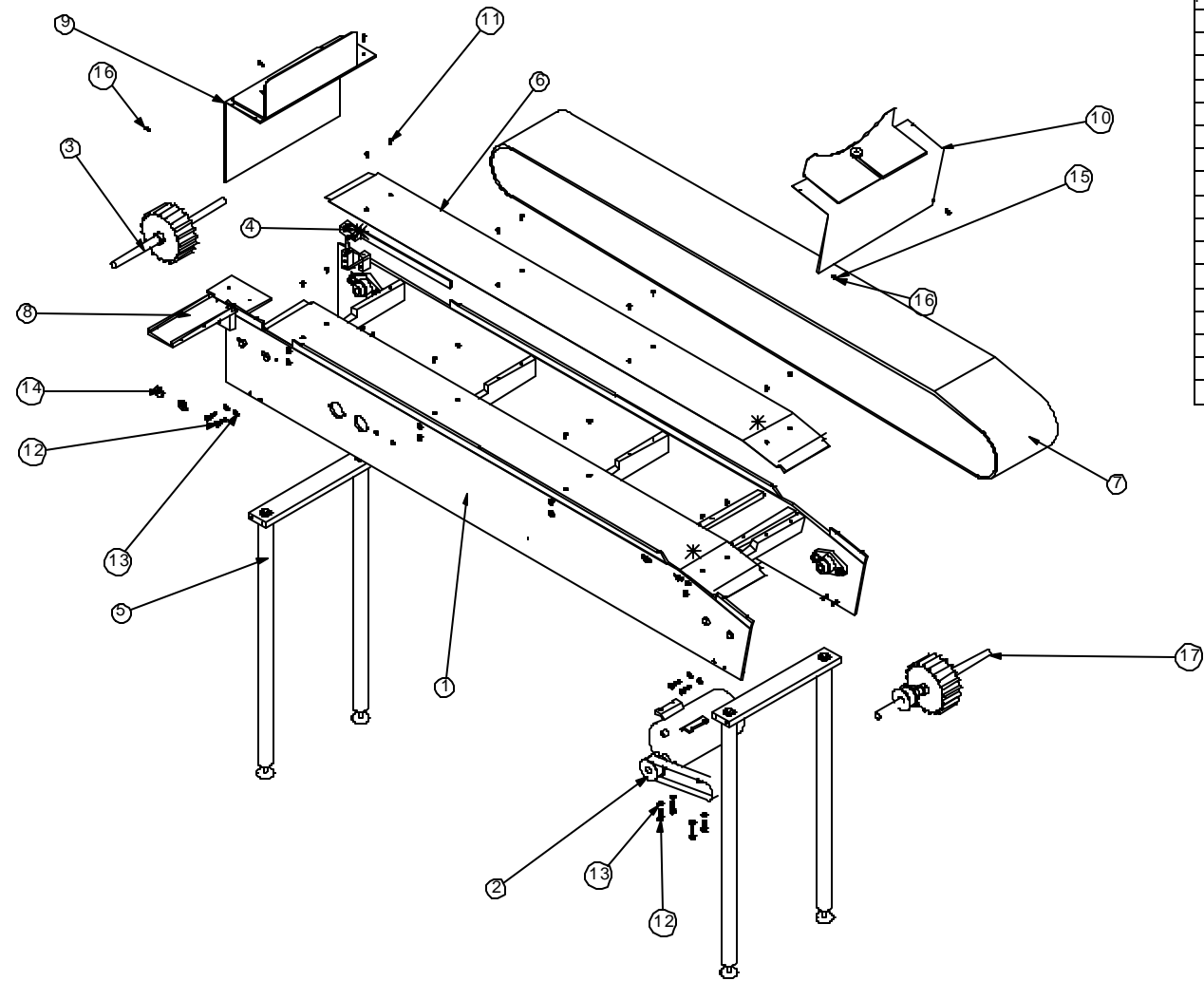
**105891**

Lateral Packing Conveyor

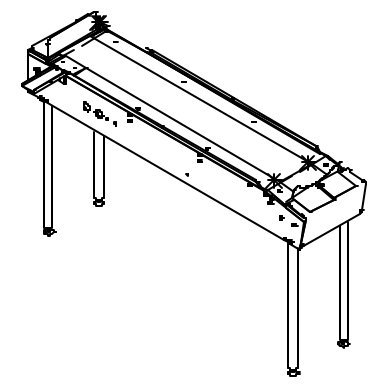
Printed 3/19/2002


Item	Qty	P/N	Title
■ 24	1	197433	Assembly,Frame,Front & Rear
■ 25	1	106441	Assembly,Ctn Release & Gate
■ 26	1	198907	Assembly,Electric





ITEM NO.	QTY.	PART NO.	DESCRIPTION
1	1	197433	Assembly, Frame
2	1	189337	ASSEMBLY, MOTOR & ATTACHMENTS
3	1	189326	Assembly Idler Shaft
4	1	106441	Assembly Carton Release Gate
5	2	189304	ASSEMBLY, CONVEYOR LEGS
6	2	106001	Plate, Top
7	1	106023	Belt, Conveyor
8	1	154676	ASSEMBLY, CHUTE, CARTON SUPPORT
9	1	189348	Assembly End Cap Panel Stacking
10	1	189359	Assembly Panel End Cap Stacking
11	16	178-425	SCREW,FKHM 8-32 x 3/8
12	12	105-693	SCREW, HHC 1/4-20 X 1
13	12	104-703	WASHER, LOCK, SPLIT, 1/4
14	4	150-452	WASHER, FLAT 3/8
15	4	105-605	WASHER, LOCK, SPLIT 6
16	5	198-225	SCREW, PHM 6-32 x 1/2
17	1	189315	Assembly Driven Shaft



A		6/2/99	HT			<b>TOLERANCES</b> UNLESS OTHERWISE NOTED .X = ±.05" .XX = ±.015" .XXX = ±.005" .XXXX = ±.0005" ANGLES = ±1/2° FRACTIONS = ±1/64"		MATERIAL: SEE COMPONENTS FINISH: NONE		PRODUCT: 26 LPC SHEET: 1 OF 1 <b>ASSEMBLY, LATERAL PACKING CONVEYOR</b>		 <b>MEYERCORD</b> 365 East North Avenue Carol Stream, Illinois 60188	
ALL DIMENSIONS IN INCHES UNLESS OTHERWISE NOTED REMOVE ALL SHARP EDGES CONFORMANCE: ASME Y14.5M-1994				DESIGN: _____ SCALE: 1:12		DRAWN: TF 6/2/99 APPR: HT 7/16/99		<b>105-891</b>					
REV	DATE	DESCRIPTION	APP	REV	DATE	DESCRIPTION	APP	THIS DOCUMENT AND THE INFORMATION CONTAINED HEREIN IS PROPRIETARY AND MAY NOT BE REPRODUCED OR OTHERWISE USED WITHOUT THE EXPRESSED WRITTEN CONSENT OF THE MEYERCORD CO.					

**Assy Tree for: 189304**

Printed 3/19/2002

**189304**

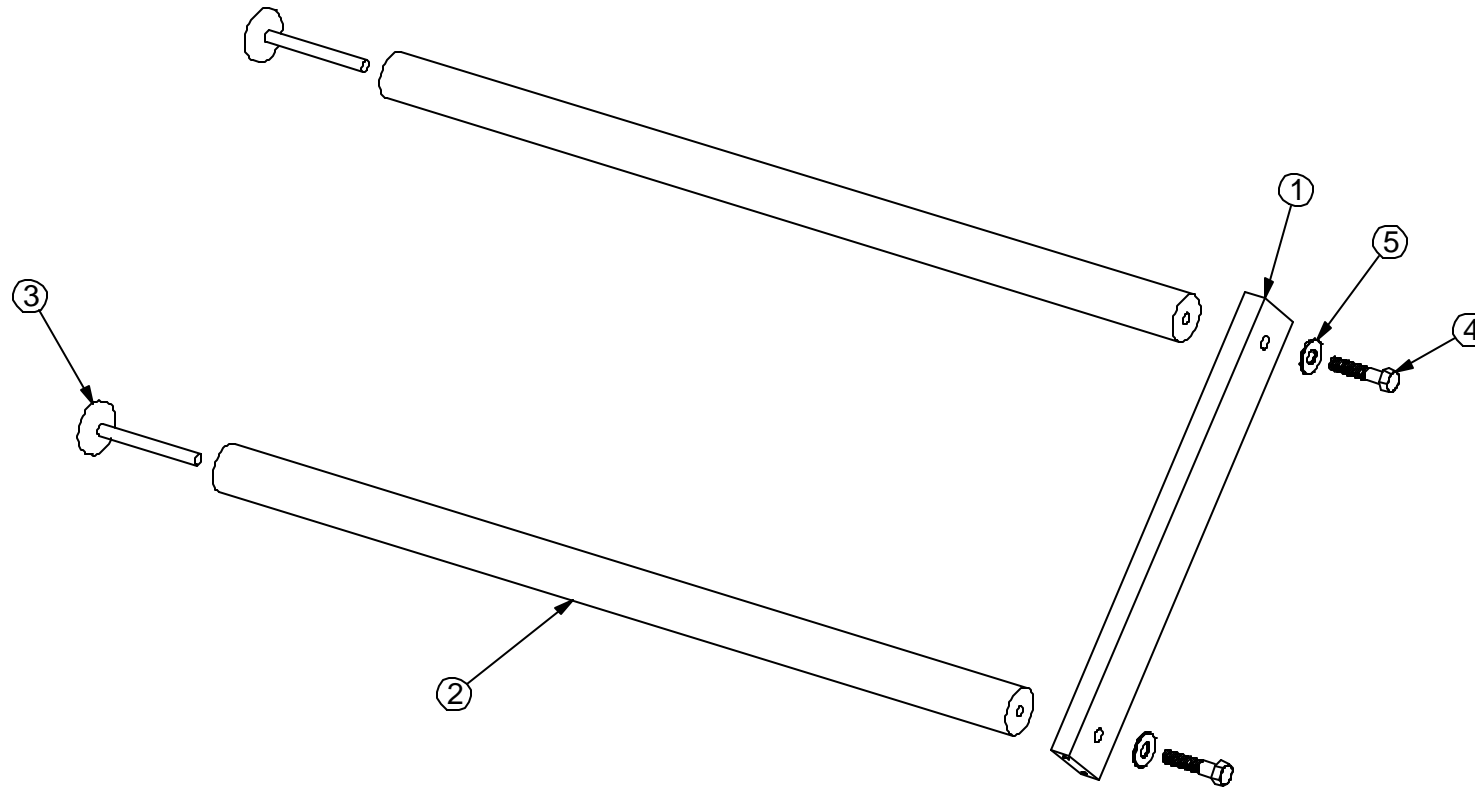
Assembly, Conveyor Legs


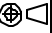
No DOC file is available.

Type	PL	Item Type	
Revision		Modeled	M,D
Status	R	Old Part #	
Date	7/14/1999	ProdCode	26
By	HT	user 5	

Item	Qty	P/N	Title
1	1	106078	Bracket, Leg, Conveyor
2	2	106089	Leg, Conveyor
3	2	106100	Foot, Leveling Jack
4	2	149814	Screw, HHC 3/8-16 x 1-3/4
5	2	150452	Washer, Flat 3/8 x 1

ITEM NO.	QTY.	PART NO.	DESCRIPTION
1	1	106078	Bracket, Leg
2	2	106089	Leg
3	2	106100	FOOT, LEVELING JACK
4	2	149814	SCREW, HHC, 3/8-16 X 1-3/4
5	2	150452	WASHER, FLAT 3/8



		<b>TOLERANCES</b> UNLESS OTHERWISE NOTED .X = ±.05" .XX = ±.015" .XXX = ±.005" .XXXX = ±.0005 ANGLES = ±1/2° FRACTIONS = ±1/64"		<b>MATERIAL:</b> SEE COMPONENTS  <b>FINISH:</b> NONE		<b>PRODUCT:</b> 26 LPC <b>SHEET:</b> 1 OF 1		 <b>MEYERCORD</b> 365 East North Avenue Carol Stream, Illinois 60188	
		ALL DIMENSIONS IN INCHES UNLESS OTHERWISE NOTED. REMOVE ALL SHARP EDGES. CONFORMANCE: ASME Y14.5M-1994		<b>ASSEMBLY, CONVEYOR LEGS</b>					
REV	DATE	DESCRIPTION	APP	 <b>DESIGN:</b> SCALE: 1:5		<b>DRAWN:</b> TF 06-02-99 APPRD: 7/14/99		<b>189-304</b>	

© THIS DOCUMENT AND THE INFORMATION CONTAINED HEREIN IS PROPRIETARY AND MAY NOT BE REPRODUCED OR OTHERWISE USED WITHOUT THE EXPRESSED WRITTEN CONSENT OF THE MEYERCORD CO.

**Assy Tree for: 189315**

Printed 3/19/2002

**189315**

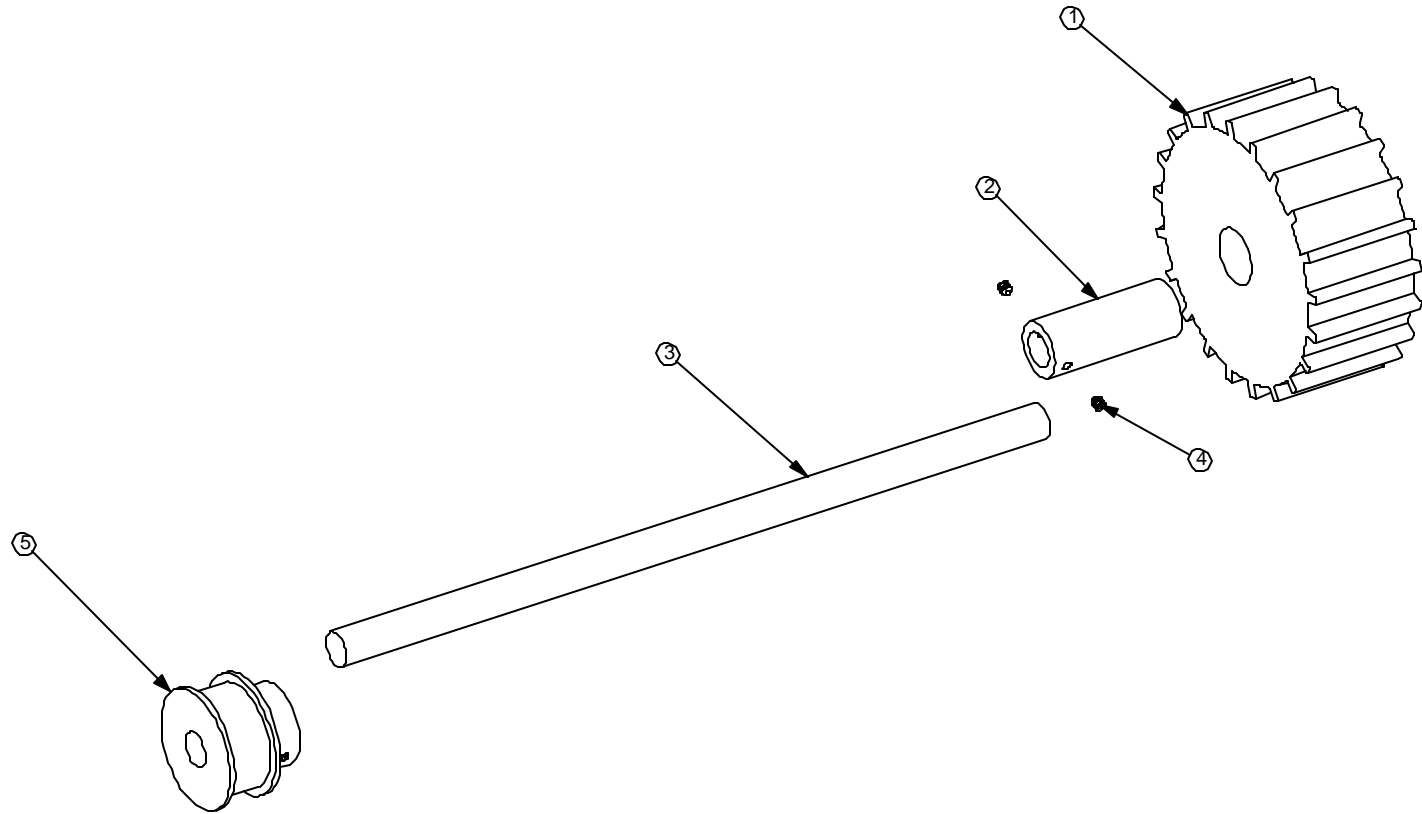
Assembly, Drive Shaft


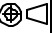
No DOC file is available.

Type	PL	Item Type	
Revision		Modeled	M,D
Status	R	Old Part #	
Date	7/15/1999	ProdCode	26
By	HT	user 5	

Item	Qty	P/N	Title
1	1	106309	Sprocket, Conveyor Belt
2	1	106298	Sprocket, Insert
3	1	106287	Shaft, Conveyor Sprocket
4	2	179338	Screw, Set Cup 10-32x3/16
5	1	194892	Pulley, 3/8pitch, 3/4wide, 16grov, 5/8id, 1.91pd, 1.88od

ITEM NO.	QTY.	PART NO.	DESCRIPTION
1	1	106309	Sprocket, Conveyor Belt
2	1	106298	Insert, Sprocket
3	1	106287	Shaft, Sprocket
4	2	179338	SCREW, SET CUP 10-32 X 3/16
5	1	194892	Pulley, 3/8p, 3/4wide, 16grov, 5/8bore, w/set-screws



		<b>TOLERANCES</b> UNLESS OTHERWISE NOTED .X = ±.05" .XX = ±.015" .XXX = ±.005" .XXXX = ±.0005" ANGLES = ±1/2° FRACTIONS = ±1/64"	<b>MATERIAL:</b> SEE COMPONENTS		<b>PRODUCT:</b> 26 LPC		 <b>MEYERCORD</b> 365 East North Avenue Carol Stream, Illinois 60188	
			<b>FINISH:</b> NONE					
		ALL DIMENSIONS IN INCHES UNLESS OTHERWISE NOTED. REMOVE ALL SHARP EDGES. CONFORMANCE: ASME Y14.5M-1994		<b>ASSEMBLY, DRIVE SHAFT</b>				
A	06-02-99	HT						
REV	DATE	DESCRIPTION	APP					
© THIS DOCUMENT AND THE INFORMATION CONTAINED HEREIN IS PROPRIETARY AND MAY NOT BE REPRODUCED OR OTHERWISE USED WITHOUT THE EXPRESSED WRITTEN CONSENT OF THE MEYERCORD CO.				 <b>DESIGN:</b> SCALE: 1:3		<b>DRAWN:</b> TF 06-02-99 <b>APPRD:</b> HT 06-02-99		<b>189-315</b>

**Assy Tree for: 189326**

Printed 3/19/2002

**189326**

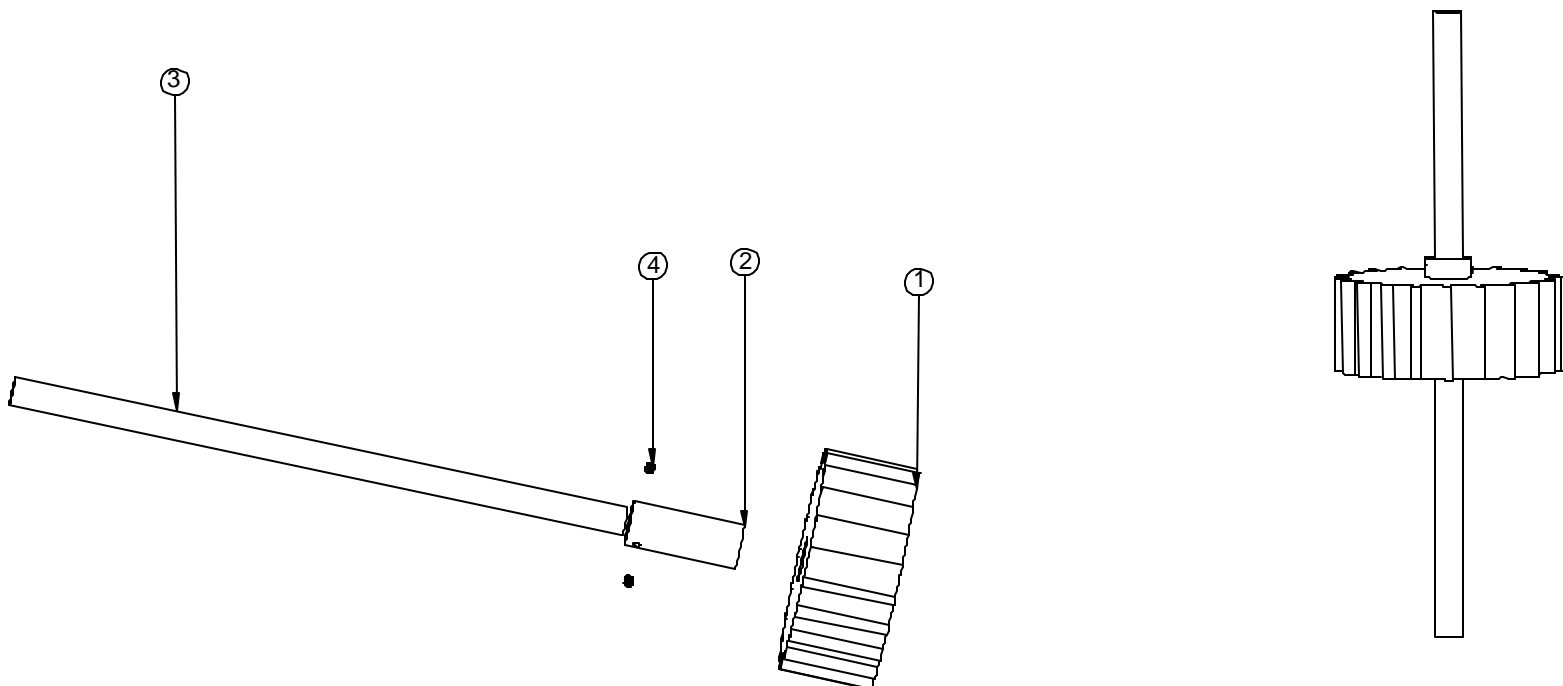
Assembly, Idler Shaft

No DOC file is available.

Type	PL	Item Type	
Revision		Modeled	M,D
Status	R	Old Part #	
Date	7/15/1999	ProdCode	26
By	HT	user 5	

Item	Qty	P/N	Title
1	1	106309	Sprocket, Conveyor Belt
2	1	106298	Sprocket, Insert
3	1	106287	Shaft, Conveyor Sprocket
4	2	179338	Screw, Set Cup 10-32x3/16


ITEM NO.	QTY.	PART NO.	DESCRIPTION
1	1	106309	Sprocket, Conveyor Belt
2	1	106298	Insert, Sprocket
3	1	106287	Shaft, Sprocket
4	2	179338	SCREW, SET CUP 10-32 X 3/16



REV	DATE	DESCRIPTION	APP
A	7/14/99		HT

**TOLERANCES**  
UNLESS OTHERWISE NOTED  
.X = ±.05"  
.XX = ±.015"  
.XXX = ±.005"  
.XXXX = ±.0005"  
ANGLES = ±1/2°  
FRACTIONS = ±1/64"

**MATERIAL:** SEE ABOVE  
**FINISH:** NONE  
ALL DIMENSIONS IN INCHES UNLESS OTHERWISE NOTED.  
REMOVE ALL SHARP EDGES.  
CONFORMANCE: ASME Y14.5M-1994

PRODUCT: 26 LPC	 <b>MEYERCORD</b> 365 East North Avenue Carol Stream, Illinois 60188
<b>IDLER SHAFT</b>	

© THIS DOCUMENT AND THE INFORMATION CONTAINED HEREIN IS PROPRIETARY AND MAY NOT BE REPRODUCED OR OTHERWISE USED WITHOUT THE EXPRESSED WRITTEN CONSENT OF THE MEYERCORD CO.

DESIGN: TF 7/14/99	DRAWN: TF 7/14/99
SCALE: 1:4	APPRD:

**189-326**

Assy Tree for: 189337

Printed 3/19/2002

**189337**

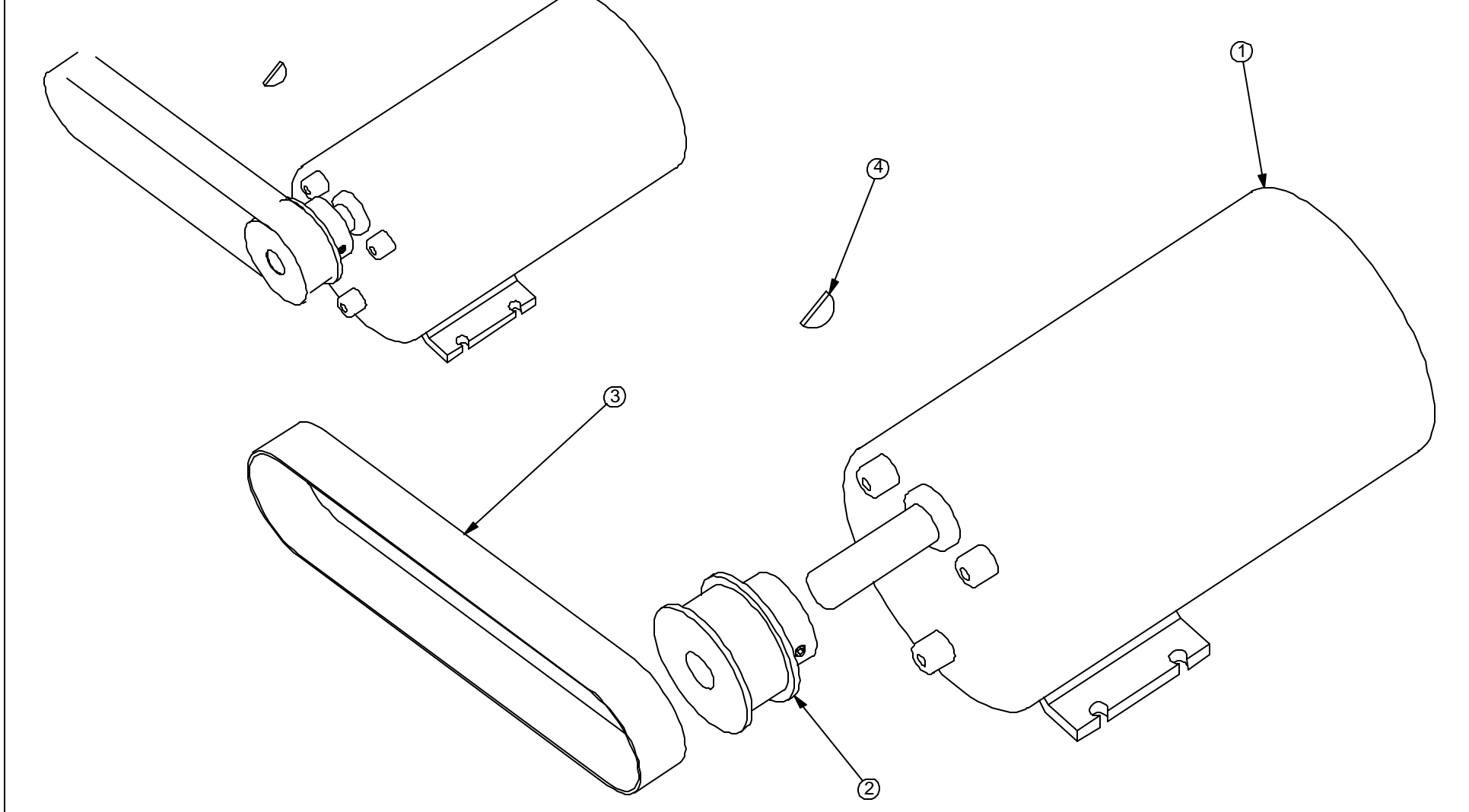
Assembly, Motor Unit


No DOC file is available.

Type	PL	Item Type	
Revision		Modeled	M,D
Status	R	Old Part #	
Date	7/15/1999	ProdCode	26
By	HT	user 5	

Item	Qty	P/N	Title
1	1	106331	Motor, Gear
2	1	106485	Pulley, 3/8pitch, 3/4wide, 14grov, 5/8id, 1.67pd, 1.64od
3	1	158867	Belt, 210L075
4	1	149880	Key, Woodruff #605

ITEM NO.	QTY.	PART NO.	DESCRIPTION
1	1	106331	Motor, Gear
2	1	194892	Pulley, 3/8p, 3/4wide, 16grov, 5/8bore, w/set-screws
3	1	158867	BELT, 210L075
4	1	149880	KEY, WOODRUF, 605



		<b>TOLERANCES</b> UNLESS OTHERWISE NOTED .X = ±.05" .XX = ±.015" .XXX = ±.005" .XXXX = ±.0005" ANGLES = ±1/2° FRACTIONS = ±1/64"		<b>MATERIAL:</b> SEE COMPONENTS <b>FINISH:</b> NONE		<b>PRODUCT:</b> 26 LPC		 <b>MEYERCORD</b> 365 East North Avenue Carol Stream, Illinois 60188	
A 06-03-99		HT		ALL DIMENSIONS IN INCHES UNLESS OTHERWISE NOTED. REMOVE ALL SHARP EDGES. CONFORMANCE: ASME Y14.5M-1994		<b>ASSEMBLY, MOTOR UNIT</b>			
REV	DATE	DESCRIPTION	APP						
© THIS DOCUMENT AND THE INFORMATION CONTAINED HEREIN IS PROPRIETARY AND MAY NOT BE REPRODUCED OR OTHERWISE USED WITHOUT THE EXPRESSED WRITTEN CONSENT OF THE MEYERCORD CO.						SCALE: 1:2	APPRD: HT 7/14/99		

**Assy Tree for: 189348**

Printed 3/19/2002

**189348**

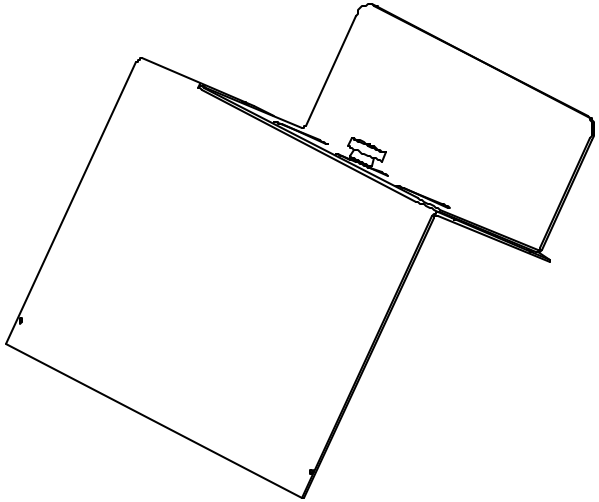
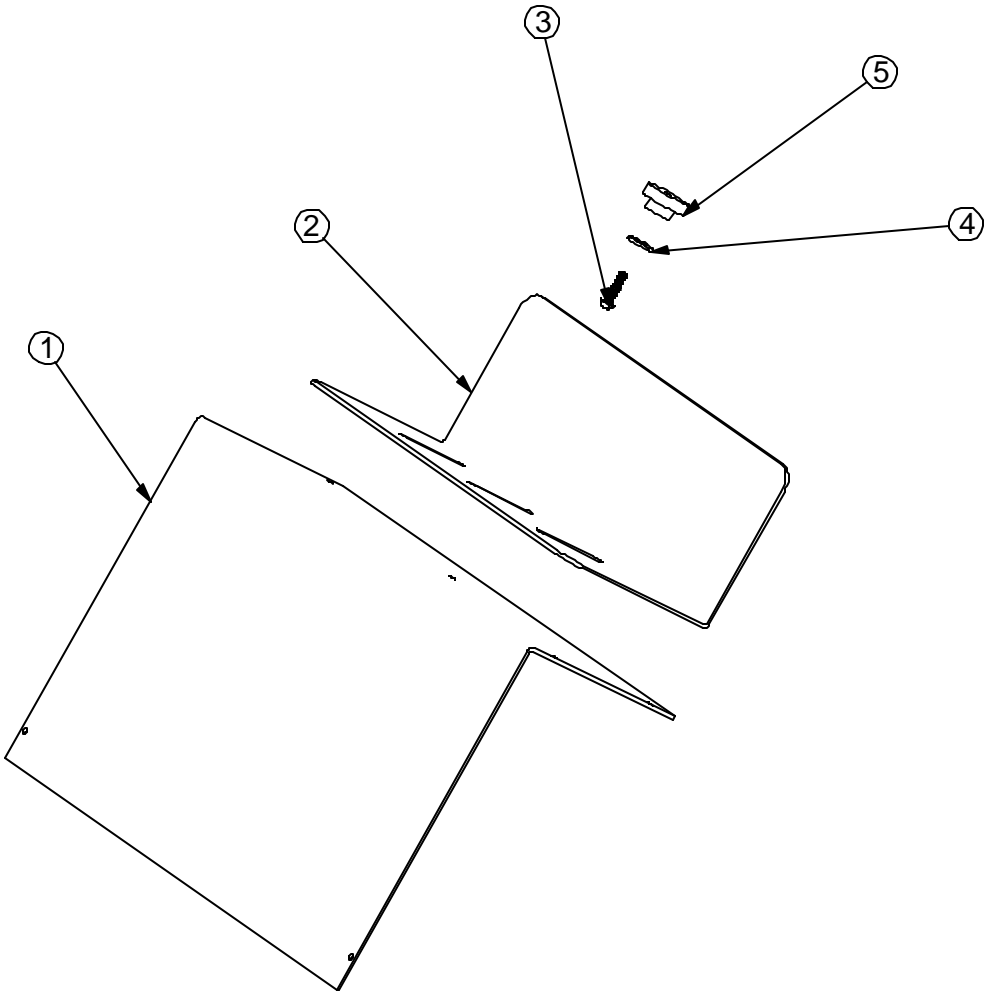
Assembly,End Cap Panel,Infeed

1 4/21/99 106661 should replace 106364 for left hand arrangement ht

Type	PL	Item Type	
Revision	1	Modeled	M,D
Status	R	Old Part #	
Date	7/15/1999	ProdCode	26
By	HT	user 5	

Item	Qty	P/N	Title
1	1	106364	Panel,End Cap,Infeed, RH
2	1	106419	Plate,Ctn Backing
3	1	192549	Screw,RHM 10-24 x 3/4
4	1	105627	Washer,Flat 1/4
5	1	198137	Handle,Knob,Knurled,10-24 thru

ITEM NO.	QTY.	PART NO.	DESCRIPTION
1	1	106364	Cap, End, Right
2	1	106419	Stabilizer, Carton
3	1	192549	Screw, RHM 10-24 x 3/4
4	1	105-627	WASHER, FLAT, 1/4
5	1	198137	Knob, knurled 10-24 thru



A	06-03-99	HT
REV	DATE	DESCRIPTION
		APP

TOLERANCES  
UNLESS OTHERWISE NOTED  
.X = ±.05"  
.XX = ±.015"  
.XXX = ±.005"  
.XXXX = ±.0005  
ANGLES = ±1/2°  
FRACTIONS = ±1/64"

MATERIAL: SEE COMPONENTS  
FINISH: NONE  
ALL DIMENSIONS IN INCHES UNLESS OTHERWISE NOTED.  
REMOVE ALL SHARP EDGES.  
CONFORMANCE: ASME Y14.5M-1994

PRODUCT: 26 LPC



**MEYERCORD**  
365 East North Avenue  
Carol Stream, Illinois 60188

**ASSEMBLY, END CAP PANEL, INFEED**

© THIS DOCUMENT AND THE INFORMATION CONTAINED HEREIN IS PROPRIETARY AND MAY NOT BE REPRODUCED OR OTHERWISE USED WITHOUT THE EXPRESSED WRITTEN CONSENT OF THE MEYERCORD CO.

DESIGN: SCALE: 1:3  
DRAWN: TF 06-03-99  
APPRD: HT 7/15/99

**189-348**

**Assy Tree for: 189359**

Printed 3/19/2002

**189359**

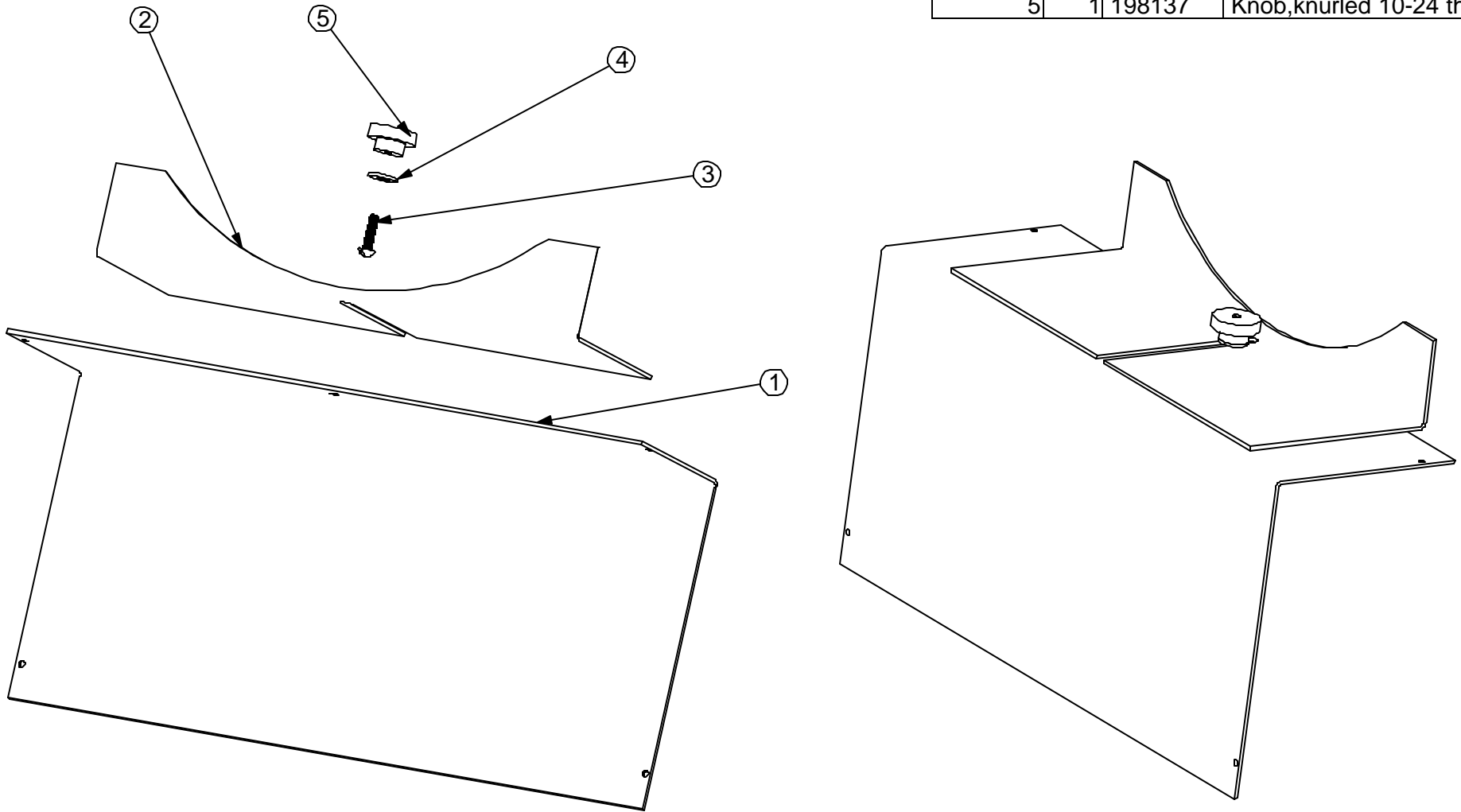
Assembly,Panel,End Cap,Stacking


No DOC file is available.

Type	PL	Item Type	
Revision		Modeled	M,D
Status	R	Old Part #	
Date	7/15/1999	ProdCode	26
By	HT	user 5	

Item	Qty	P/N	Title
1	1	106408	Panel,End Cap,Stacking
2	1	106386	Plate,Ctn Rest
3	1	192549	Screw,RHM 10-24 x 3/4
4	1	105627	Washer,Flat 1/4
5	1	198137	Handle,Knob,Knurled,10-24 thru

ITEM NO.	QTY.	PART NO.	DESCRIPTION
1	1	106408	Panel,End Cap,Stacking
2	1	106386	Plate, Carton Gate
3	1	192549	Screw,RHM 10-24 x 3/4
4	1	105-627	WASHER, FLAT, 1/4
5	1	198137	Knob, knurled 10-24 thru



		<b>TOLERANCES</b> UNLESS OTHERWISE NOTED .X = ±.05" .XX = ±.015" .XXX = ±.005" .XXXX = ±.0005 ANGLES = ±1/2° FRACTIONS = ±1/64"	<b>MATERIAL:</b> SEE COMPONENTS		<b>PRODUCT:</b> 26 LPC		 <b>MEYERCORD</b> 365 East North Avenue Carol Stream, Illinois 60188	
			<b>FINISH:</b> NONE					
			ALL DIMENSIONS IN INCHES UNLESS OTHERWISE NOTED. REMOVE ALL SHARP EDGES. CONFORMANCE: ASME Y14.5M-1994		<b>ASSEMBLY, END CAP PANEL, STACKING</b>			
A	06-04-99		HT					
REV	DATE	DESCRIPTION	APP			SCALE: 1:3	APPRD: HT 06-04-99	189-359
© THIS DOCUMENT AND THE INFORMATION CONTAINED HEREIN IS PROPRIETARY AND MAY NOT BE REPRODUCED OR OTHERWISE USED WITHOUT THE EXPRESSED WRITTEN CONSENT OF THE MEYERCORD CO.								

**Assy Tree for: 154676**

Printed 3/19/2002

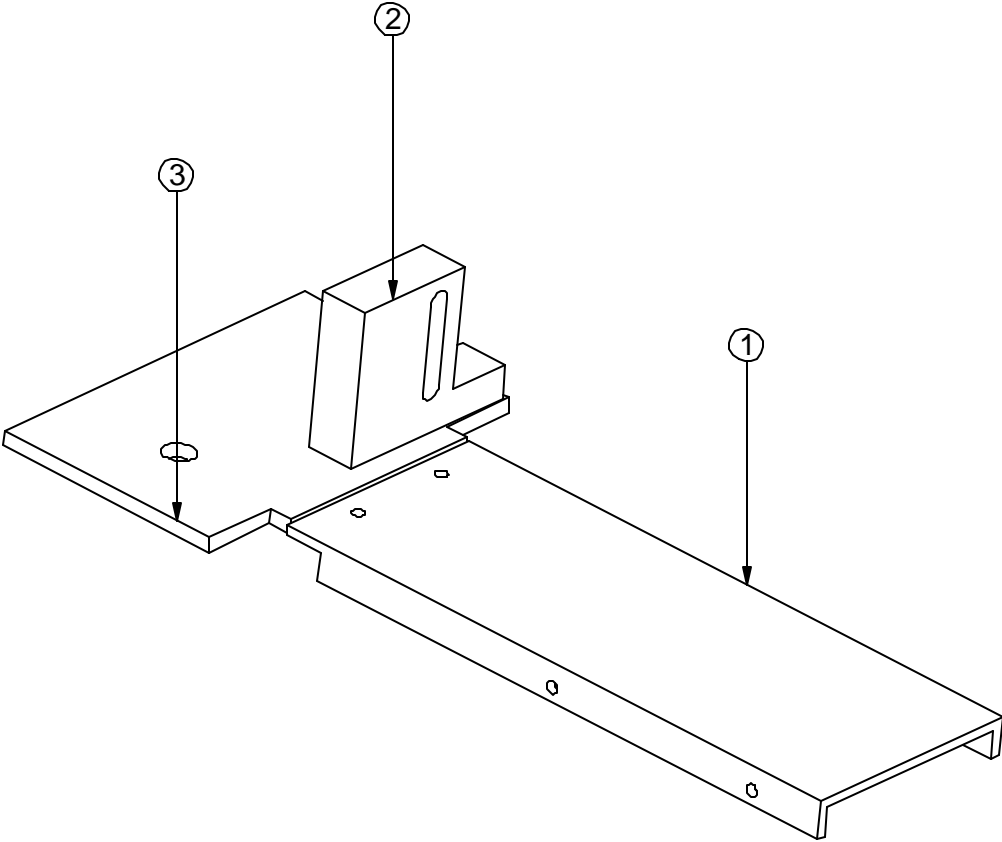
**154676**


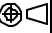
ASSEMBLY,100MM CHUTE BRACE

Type	PL	Item Type	
Revision		Modeled	M,D
Status	U	Old Part #	LPC- 13A
Date	6/2/1999	ProdCode	26
By	TF	user 5	

Item	Qty	P/N	Title
1	1	106144	Block,Ctn Chute Support
2	1	106067	Plate,Ctn Chute,Joins to 100SM

ITEM NO.	QTY.	PART NO.	DESCRIPTION
1	1	106067	Plate, Carton Chute
2	1	106144	Block Ctn Chute Support
3	1	106045	Plate, Carton Spacer



		<b>TOLERANCES</b> UNLESS OTHERWISE NOTED .X = ±.05" .XX = ±.015" .XXX = ±.005" .XXXX = ±.0005 ANGLES = ±1/2° FRACTIONS = ±1/64"	<b>MATERIAL:</b> SEE COMPONENTS		<b>PRODUCT:</b> 26 LPC		 <b>MEYERCORD</b> 365 East North Avenue Carol Stream, Illinois 60188	
			<b>FINISH:</b> NONE					
		ALL DIMENSIONS IN INCHES UNLESS OTHERWISE NOTED. REMOVE ALL SHARP EDGES. CONFORMANCE: ASME Y14.5M-1994		<b>LATERAL PACKING CONVEYOR          ASSEMBLY, CARTON, SUPPORT CHUTE</b>				
A	06-02-99	HT						
REV	DATE	DESCRIPTION	APP					
© THIS DOCUMENT AND THE INFORMATION CONTAINED HEREIN IS PROPRIETARY AND MAY NOT BE REPRODUCED OR OTHERWISE USED WITHOUT THE EXPRESSED WRITTEN CONSENT OF THE MEYERCORD CO.				 <b>DESIGN:</b> SCALE: 1:2		<b>DRAWN:</b> TF 06-02-99 <b>APPRD:</b> HT 06-02-99		<b>154-676</b>

**Assy Tree for: 197433**

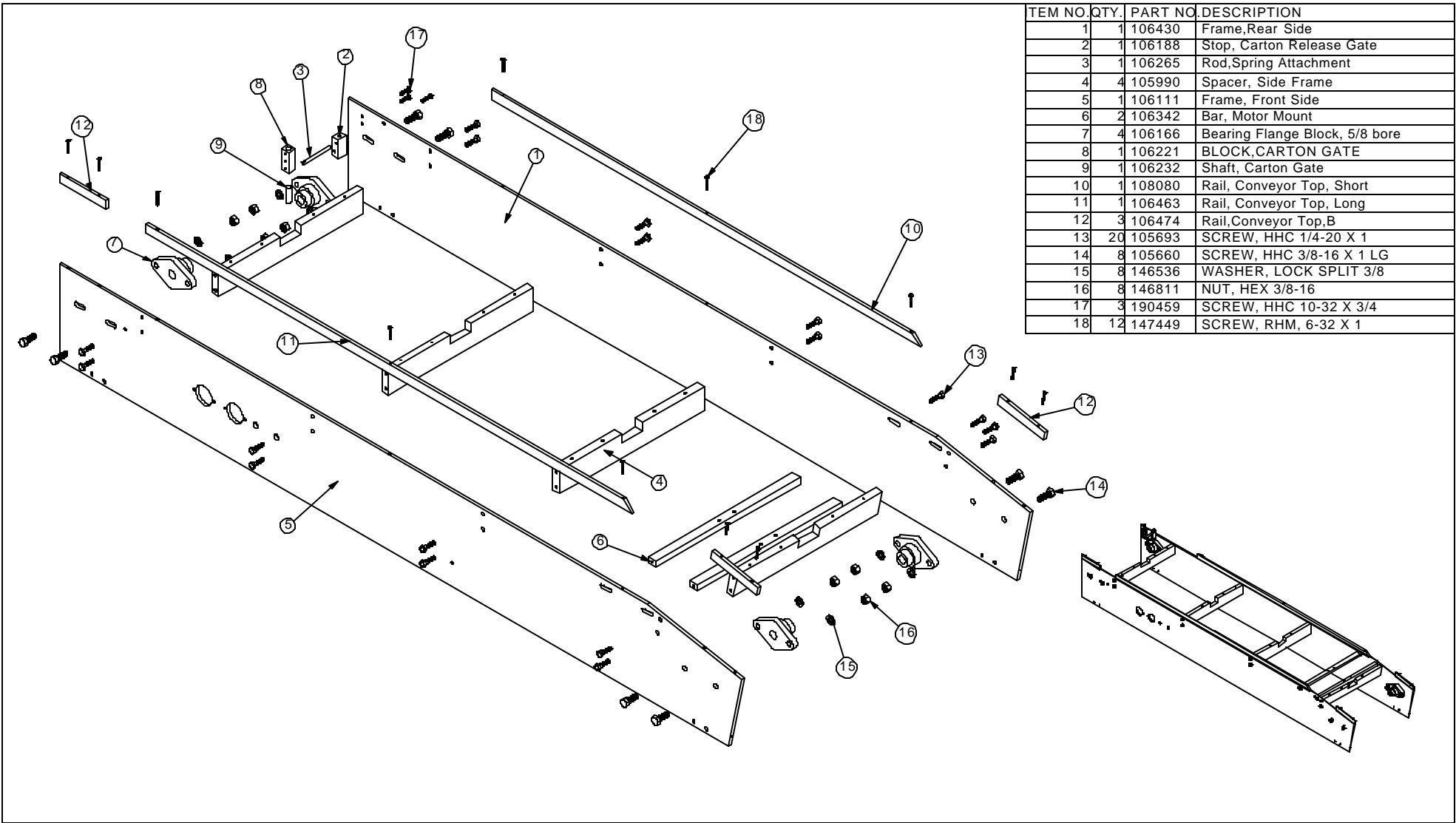
Printed 3/19/2002

**197433**

Assembly,Frame,Front & Rear

Type	PL	Item Type	
Revision	0	Modeled	M,D
Status	R	Old Part #	
Date	7/15/1999	ProdCode	26
By	TF	user 5	

Item	Qty	P/N	Title
1	1	106430	Frame,Rear Side
2	1	106188	Stop,Ctn Release
3	1	106265	Rod,Spring Attachment
4	4	105990	Spacer,Side Frame
5	1	106111	Frame,Front Side
6	2	106342	Mount,Motor
7	4	106166	Bearing,Flange-block,5/8 bore
8	1	106221	Block,Ctn Gate
9	1	106232	Shaft,Ctn Gate
10	1	108080	Rail,Conveyor Top,Short
11	1	106463	Rail,Conveyor Top,Lg
12	3	106474	Rail,Conveyor Top-B
13	2	105693	Screw,HHC 1/4-20 x 1
14	8	105660	Screw,HHC 3/8-16 x 1
15	4	146536	Washer,Lock,Split 3/8
16	4	146811	Nut,Hex,Full 3/8-16
17	3	190459	Screw,HHC, 10-32 x 3/4
18	6	147449	Screw,RHM 6-32 x 1



ITEM NO.	QTY.	PART NO.	DESCRIPTION
1	1	106430	Frame, Rear Side
2	1	106188	Stop, Carton Release Gate
3	1	106265	Rod, Spring Attachment
4	4	105990	Spacer, Side Frame
5	1	106111	Frame, Front Side
6	2	106342	Bar, Motor Mount
7	4	106166	Bearing Flange Block, 5/8 bore
8	1	106221	BLOCK, CARTON GATE
9	1	106232	Shaft, Carton Gate
10	1	108080	Rail, Conveyor Top, Short
11	1	106463	Rail, Conveyor Top, Long
12	3	106474	Rail, Conveyor Top, B
13	20	105693	SCREW, HHC 1/4-20 X 1
14	8	105660	SCREW, HHC 3/8-16 X 1 LG
15	8	146536	WASHER, LOCK SPLIT 3/8
16	8	146811	NUT, HEX 3/8-16
17	3	190459	SCREW, HHC 10-32 X 3/4
18	12	147449	SCREW, RHM, 6-32 X 1

REV	DATE	DESCRIPTION	APP	REV	DATE	DESCRIPTION	APP

TOLERANCES  
UNLESS OTHERWISE NOTED  
.X = ±.05"  
.XX = ±.015"  
.XXX = ±.005"  
.XXXX = ±.0005"  
ANGLES = ±1/2°  
FRACTIONS = ±1/64"

MATERIAL: SEE COMPONENTS  
FINISH: NONE  
ALL DIMENSIONS IN INCHES UNLESS OTHERWISE NOTED  
REMOVE ALL SHARP EDGES  
CONFORMANCE: ASME Y14.5M-1994

PRODUCT: 026 LPC		MEYERCORD 365 East North Avenue Carol Stream, Illinois 60188
<b>ASSEMBLY, FRAME</b>		
DESIGN: [blank]	DRAWN: TF 06-21-99	<b>197-433</b>
SCALE: U:1	APPRD: HT 7/10/99	

THIS DOCUMENT AND THE INFORMATION CONTAINED HEREIN IS PROPRIETARY AND MAY NOT BE REPRODUCED OR OTHERWISE USED WITHOUT THE EXPRESSED WRITTEN CONSENT OF THE MEYERCORD CO.

Assy Tree for: 106441

Printed 3/19/2002

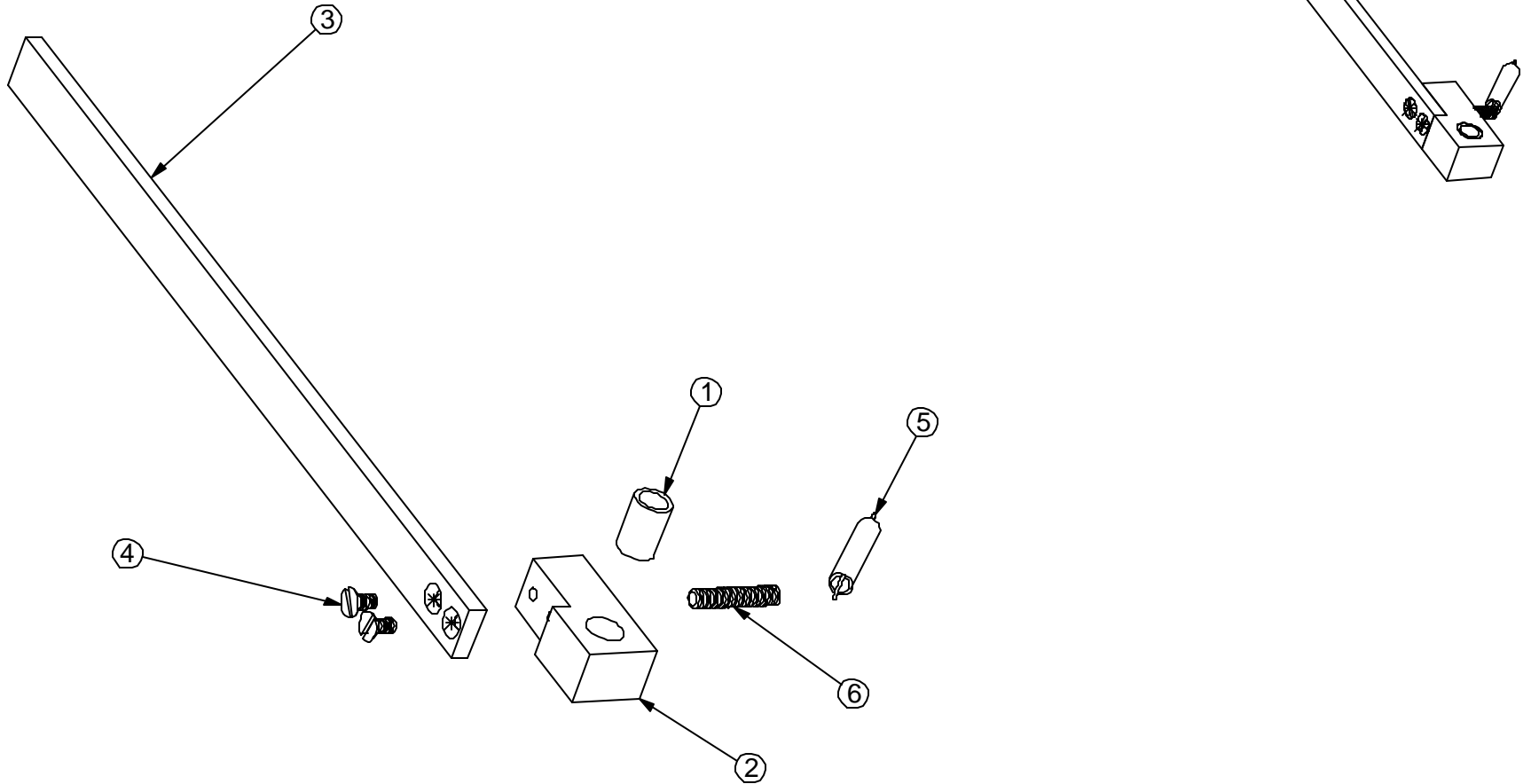
**106441**

Assembly,Ctn Release & Gate

Type	PL	Item Type	
Revision		Modeled	M,D
Status	R	Old Part #	LPC-3
Date	7/14/1999	ProdCode	26
By	ht	user 5	

Item	Qty	P/N	Title
1	1	106243	Bearing,Bush .3765 x.5030 x .75 bronze plain
2	1	108091	Block,Ctn Gate
3	1	106584	Extension,Ctn Gate
4	2	104736	Screw,FLHM 10-32 x 3/8
5	1	106518	Spring,Ext .23 x .039 x 1.5
6	1	106276	Screw,Spring Mtg,1/4-20x1-1/4


ITEM NO.	QTY.	PART NO.	DESCRIPTION
1	1	106243	BEARING, BUSHING.3765 x .503 x .75
2	1	108091	Block, Carton Gate
3	1	106584	Extension, Carton Gate
4	2	104736	SCREW, FLHM, 10-32 X 3/8
5	1	106518	SPRING, EXT .25 X .03 X 1.5
6	1	106276	Screw, Spring Anchor, 1/4-20 x 1.25



REV	DATE	DESCRIPTION	APP
A	06-02-99		HT

TOLERANCES  
UNLESS OTHERWISE NOTED  
.X = ±.05"  
.XX = ±.015"  
.XXX = ±.005"  
.XXXX = ±.0005"  
ANGLES = ±1/2°  
FRACTIONS = ±1/64"

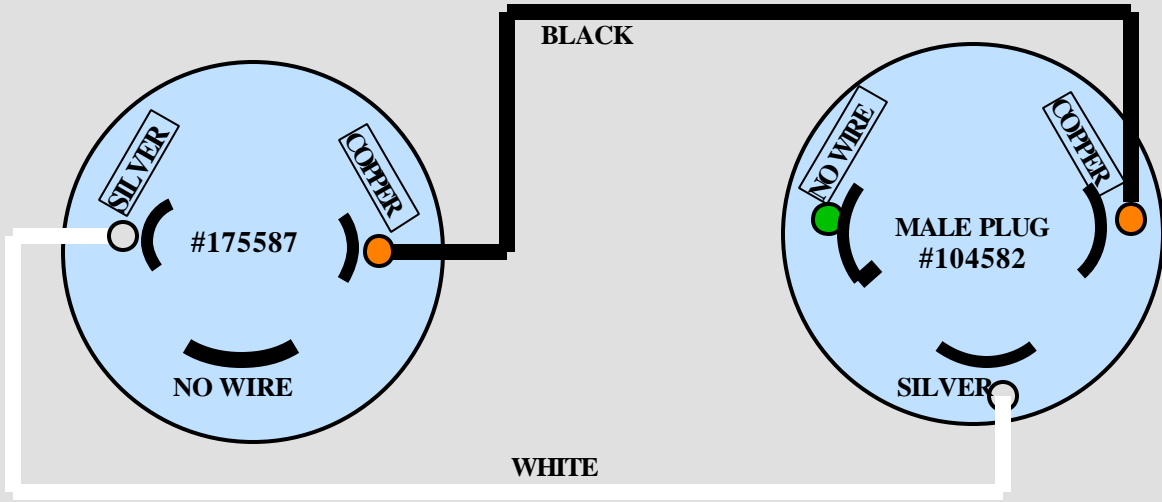
MATERIAL: SEE COMPONENTS  
FINISH: NONE  
ALL DIMENSIONS IN INCHES UNLESS OTHERWISE NOTED.  
REMOVE ALL SHARP EDGES.  
CONFORMANCE: ASME Y14.5M-1994

PRODUCT: 26 LPC	 <b>MEYERCORD</b> 365 East North Avenue Carol Stream, Illinois 60188
<b>ASSEMBLY, CARTON GATE</b>	

© THIS DOCUMENT AND THE INFORMATION CONTAINED HEREIN IS PROPRIETARY AND MAY NOT BE REPRODUCED OR OTHERWISE USED WITHOUT THE EXPRESSED WRITTEN CONSENT OF THE MEYERCORD CO.

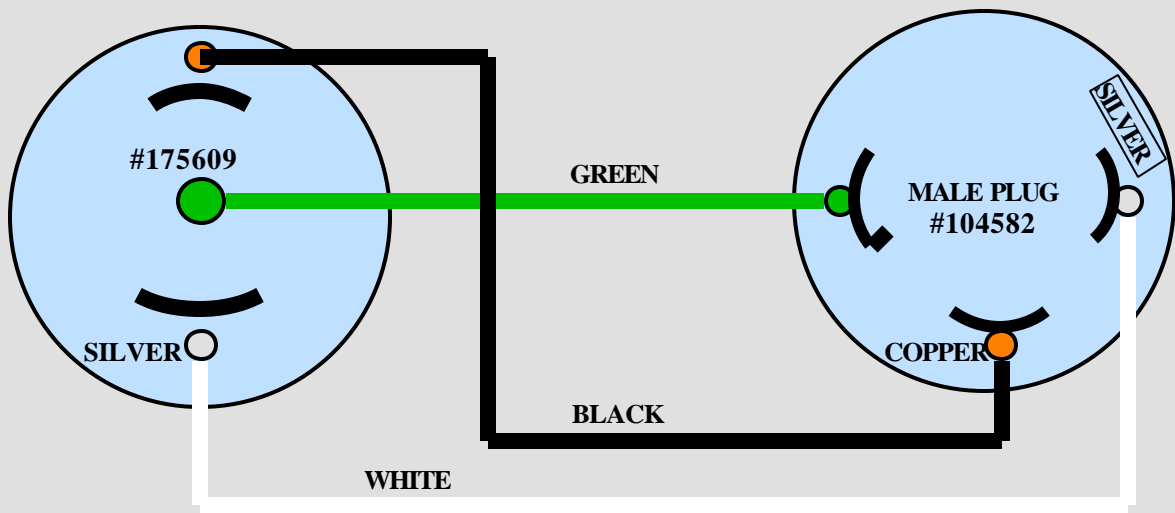
DESIGN:	DRAWN: TF 06-02-99	<b>106-441</b>
SCALE: 1:2	APPRD: HT 7/14/99	

**“A” line Electrical Cords for the LPC**



GRAY 16 GAUGE/2C 14 FEET LONG

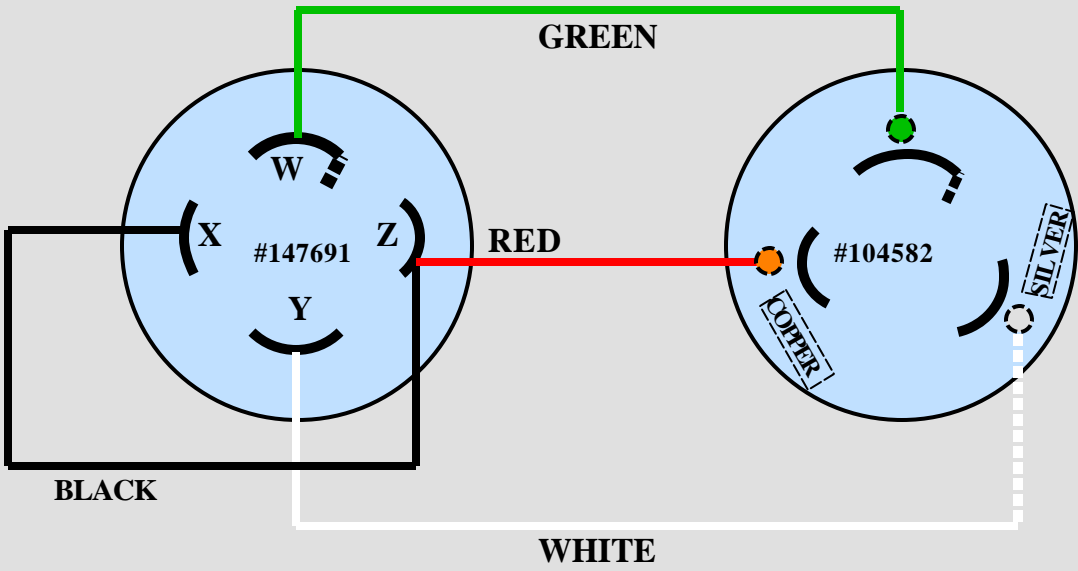
**FEEDER SWITCH CABLE (# 164631); OLD# FEP-121**



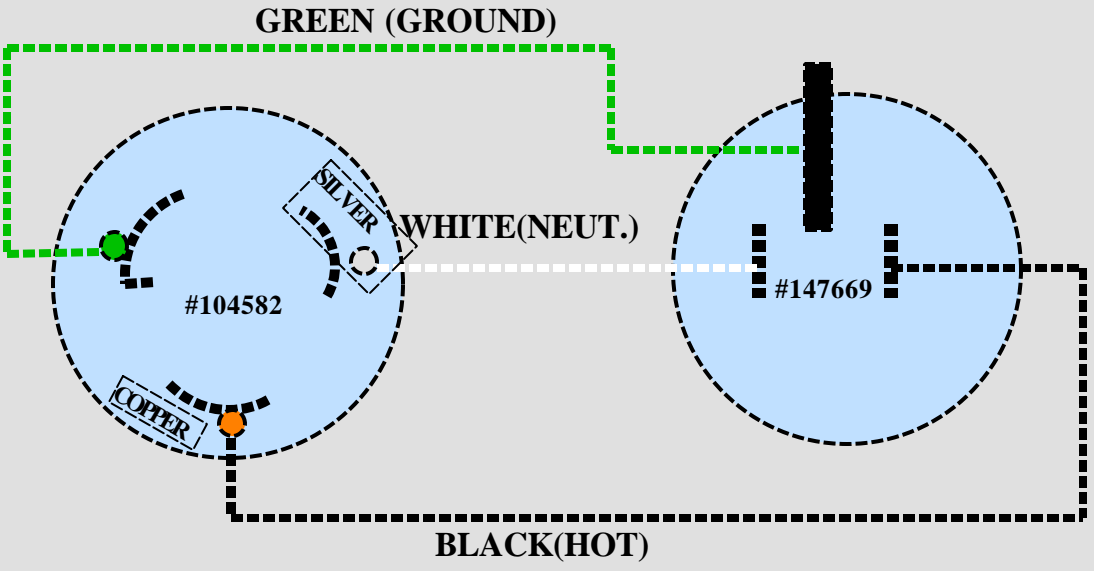
BLACK-SJO CORD 16 GAUGE/2C 14 FEET LONG

**LINE CORD (# 164730); OLD# FEP-123**

**“M” Line Electrical Cords for the LPC**



**FEEDER SWITCH CABLE**  
16 AWG/4C, 12 FEET LONG



**LINE CORD**  
16 AWG/3C, 12 FEET LONG